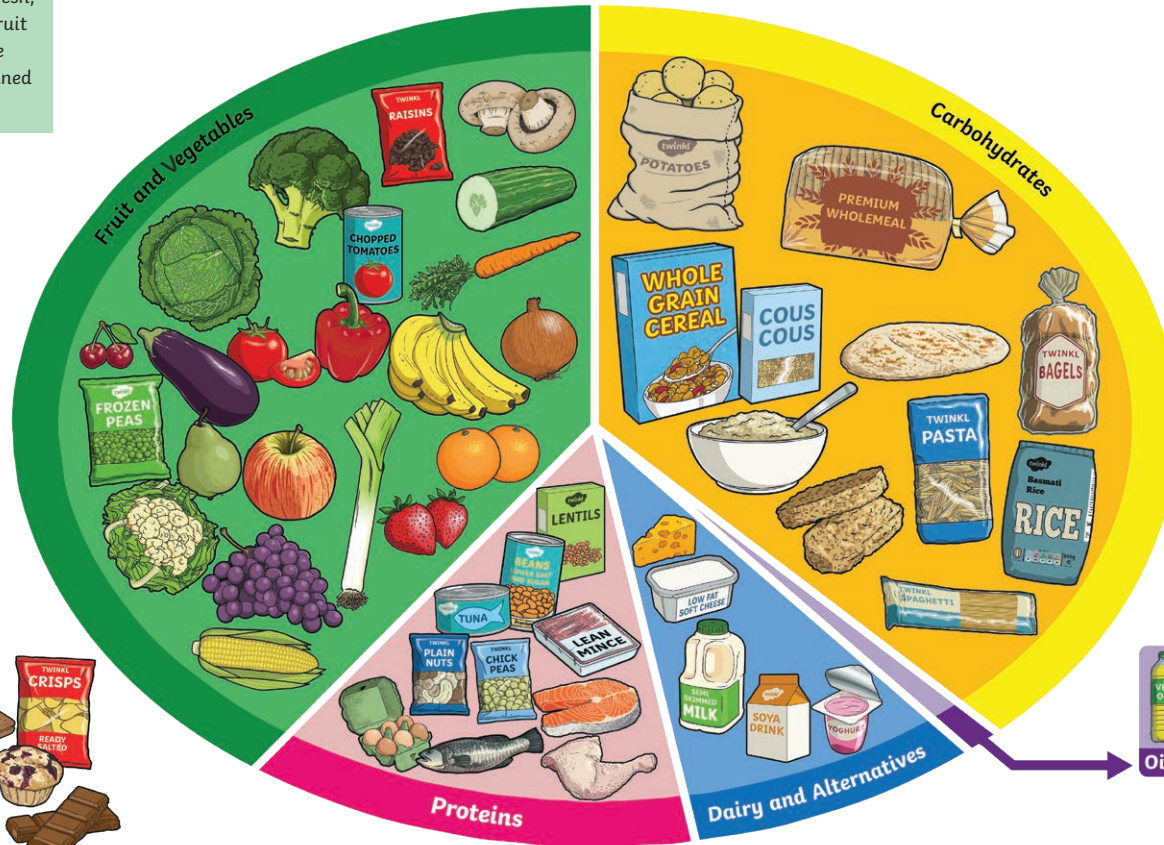


Eatwell Guide

Click [here](#) for the Eatwell Guide

Fruit and Vegetables

These are good sources of vitamins and minerals and fibre. Aim to eat 5 portions a day! Choose from fresh, frozen, tinned, dried or juiced. Fruit juice and/or smoothies should be limited to no more than a combined total of 150ml per day.



6-8
a day

Water, lower fat milk, sugar-free drinks including tea and coffee all count.
Limit fruit juice and/or smoothies to a total of 150ml a day.

Carbohydrates

Starchy foods, such as potatoes, bread, rice, pasta and cereals should make up just over a third of the food you eat. These are important for giving us energy. Choose higher-fibre, wholegrain varieties, such as wholewheat pasta and brown rice, or simply leave skins on potatoes.

Oil and Spreads

Choose unsaturated oils and spreads and use in small amounts. Eat sparingly.

Food and Drinks High in Fat and/or Sugar

Eat less often and in small amounts.



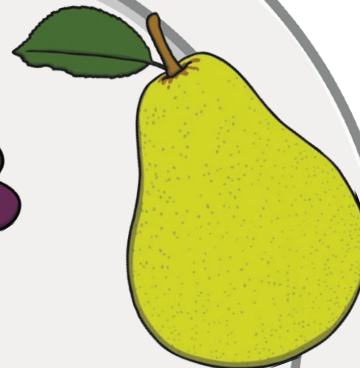
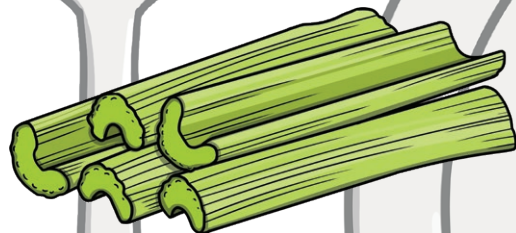
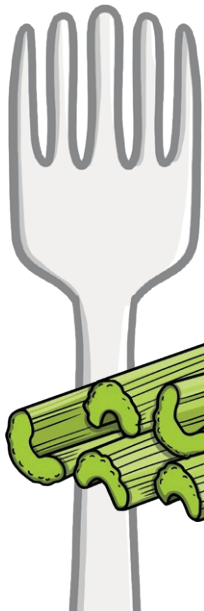
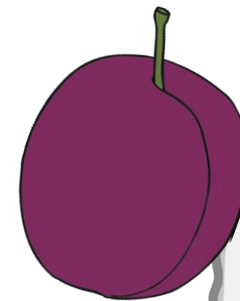
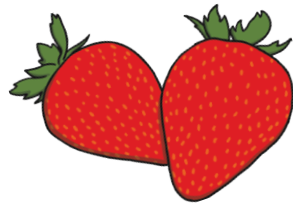
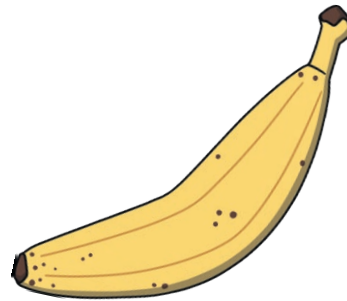
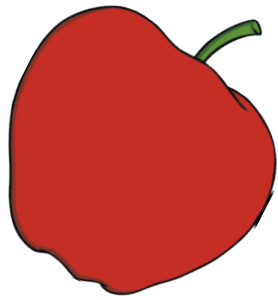
Proteins

Proteins such as beans, pulses, fish, eggs and meat are very important for helping us grow and build muscles. Beans and pulses are a good alternative to meat as they contain less fat and are higher in fibre and protein. Try to eat 2 portions of fish a week, and try to reduce intake of red and processed meat.

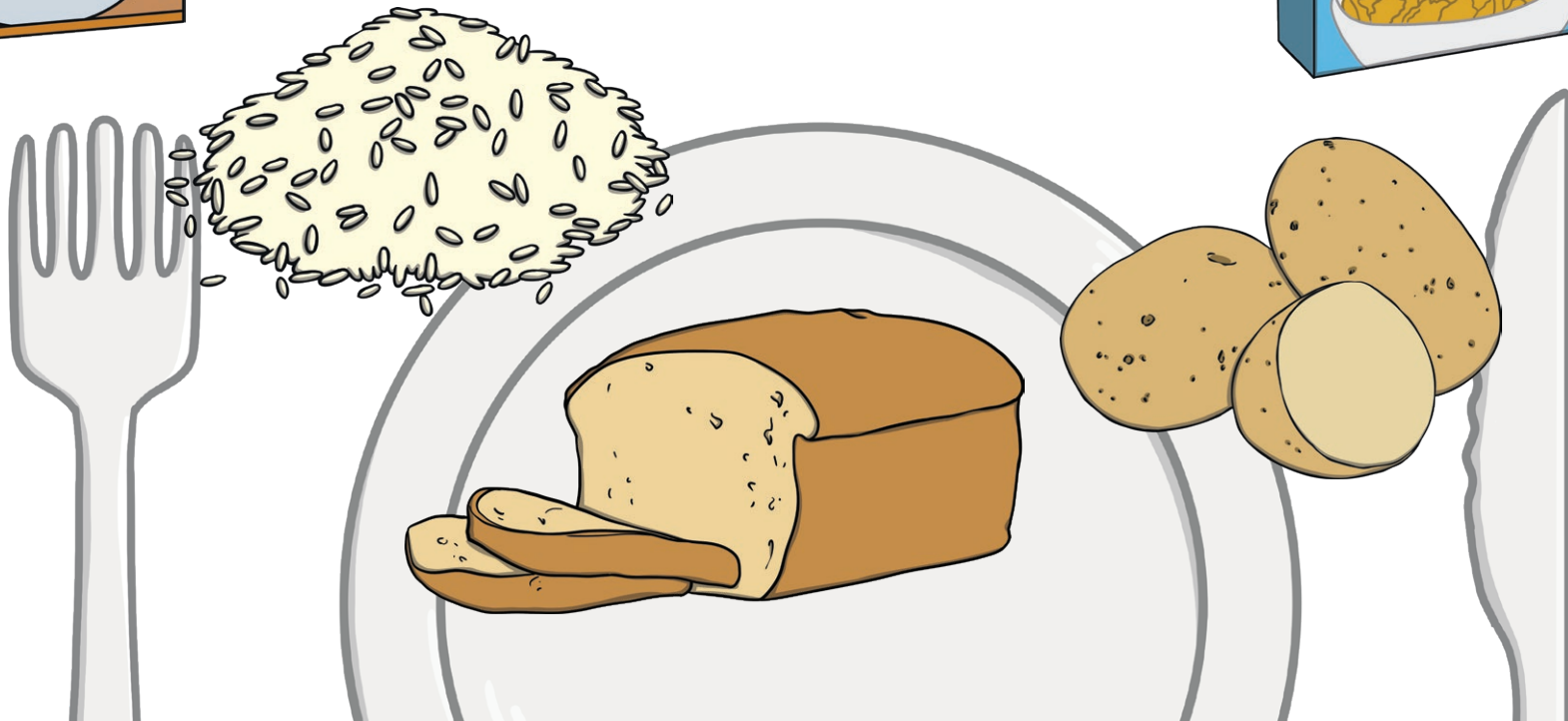
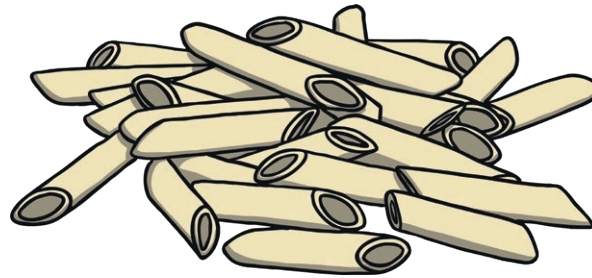
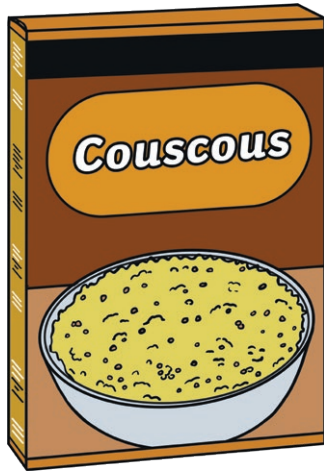
Dairy and Alternatives

These are a source of calcium which is important for strong teeth and bones. Choose lower fat and sugar options.

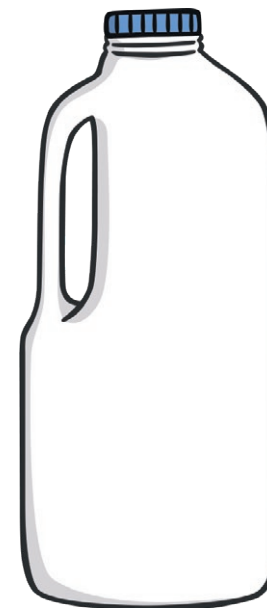
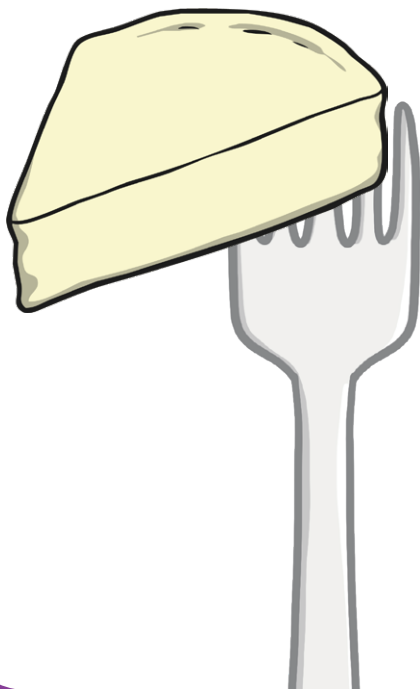
Fruit and Vegetables



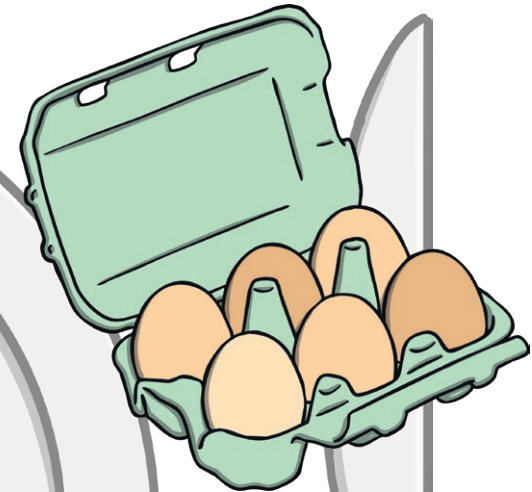
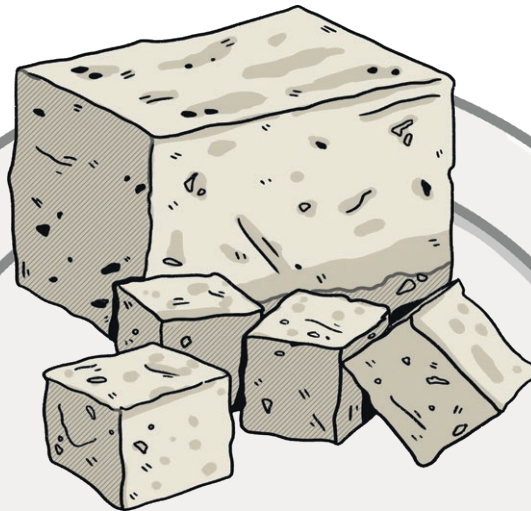
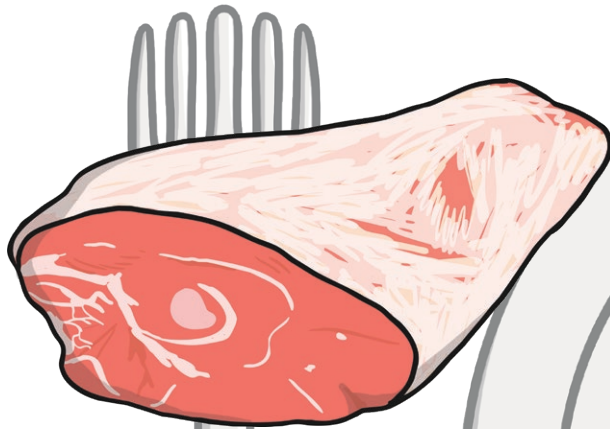
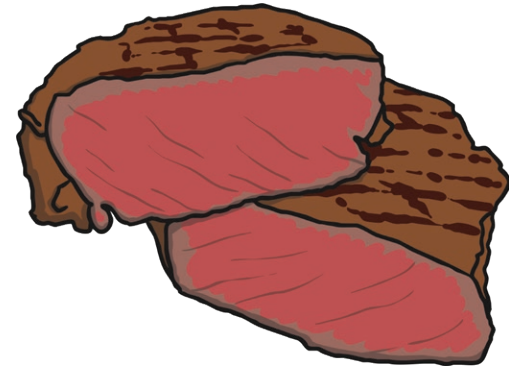
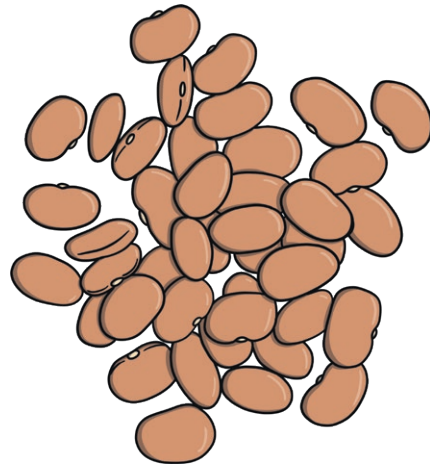
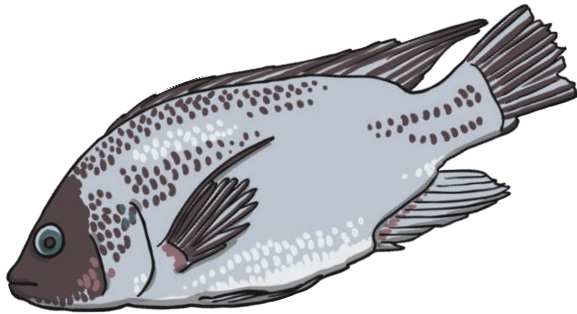
Carbohydrates



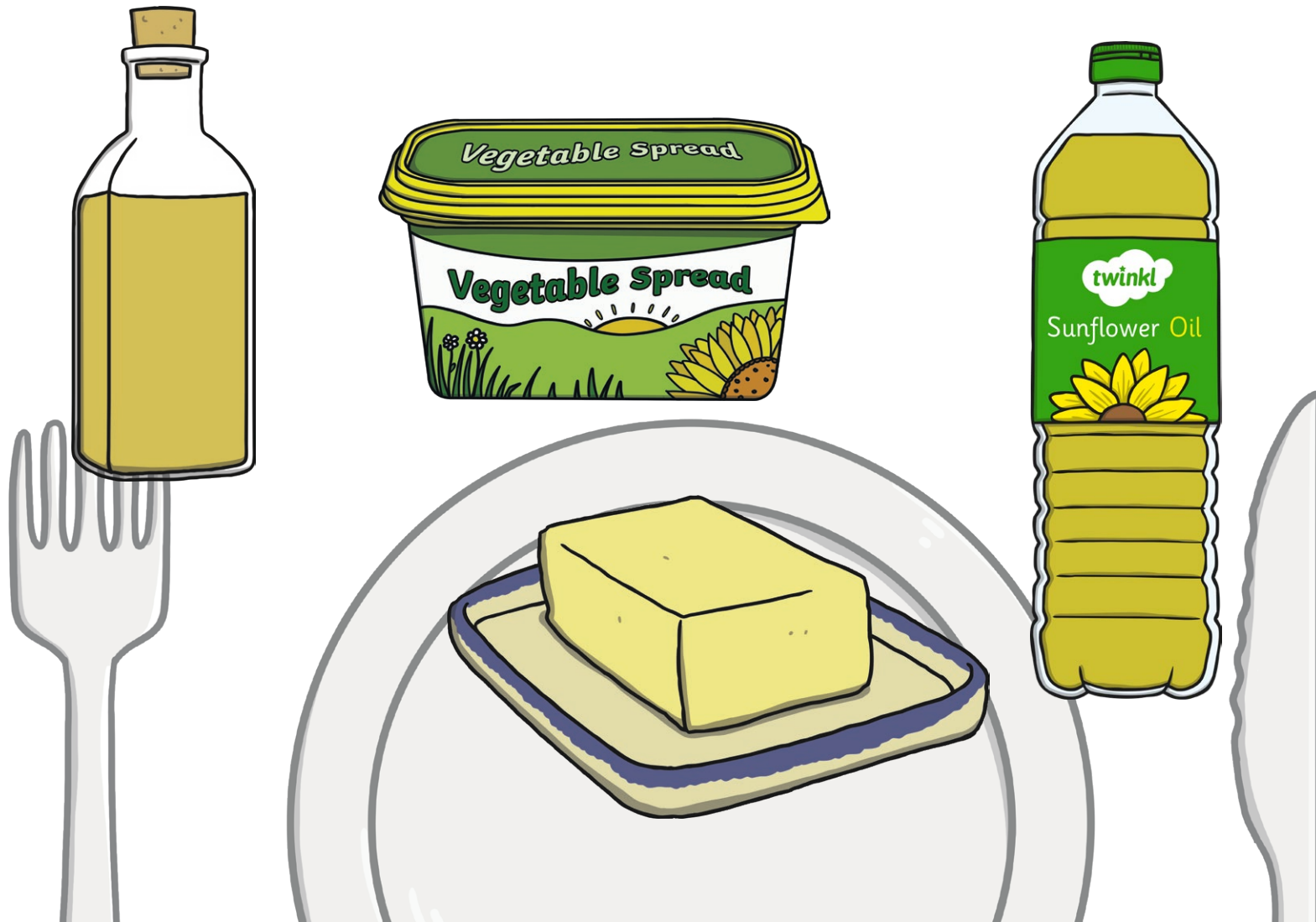
Dairy and Alternatives



Protein



Oil and Spreads



Other Foods

