

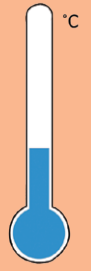
# Mammals



- Are **warm**-blooded.
- Live on land and in water.
- Have hair or fur.
- Have skeletons on the inside of their bodies.
- Give birth to live babies which drink their mother's milk.



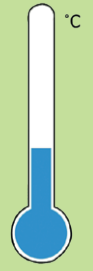
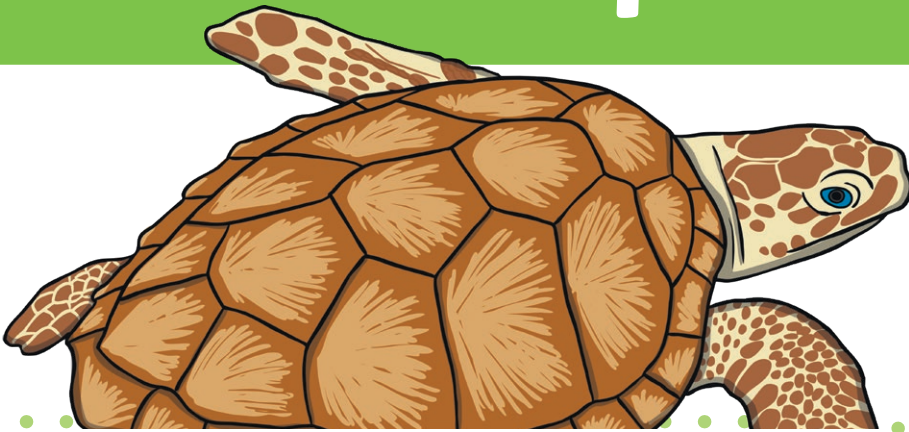
# Amphibians



- Are **cold**-blooded.
- Live on land and in water.
- Have moist skin and webbed feet.
- Have skeletons on the inside of their bodies.
- Lay eggs.



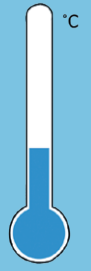
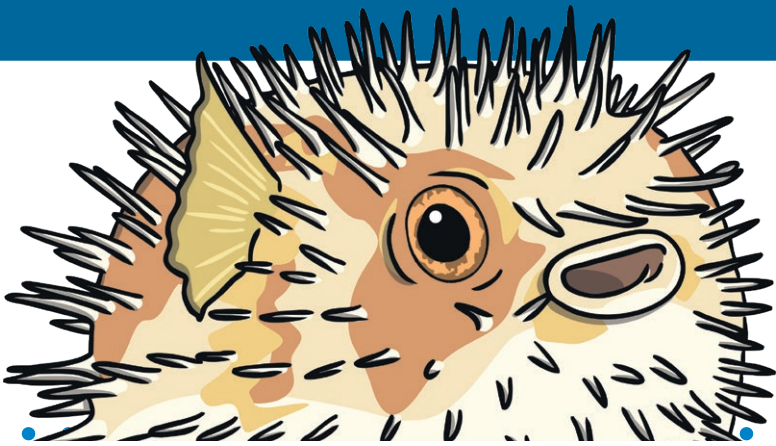
# Reptiles



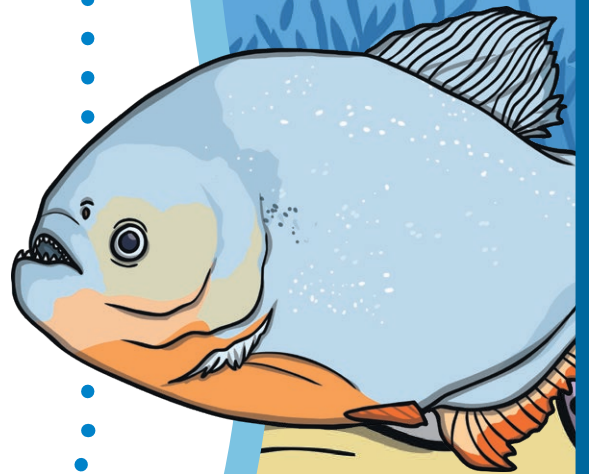
- Are **cold**-blooded.
- Live on land and in water.
- Have scales, ear holes and dry skin.
- Have skeletons on the inside of their bodies (but tortoises have one on the outside, too!)
- Lay eggs.



# Fish



- Are **cold**-blooded.
- Live in water.
- Have fins to move and gills to breathe underwater.
- Have skeletons inside their bodies.
- Lay eggs (in water).



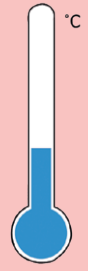
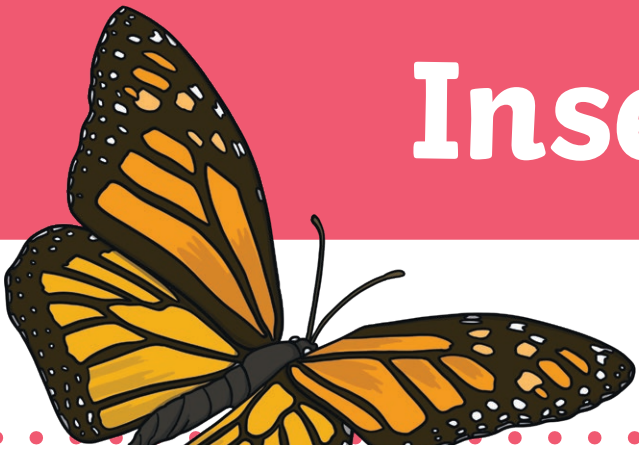
# Birds



- Are **warm**-blooded.
- Live on land and water.
- Have feathers (unique to birds), wings and a beak.
- Have skeletons on the inside of their bodies.
- Lay eggs.



# Insects



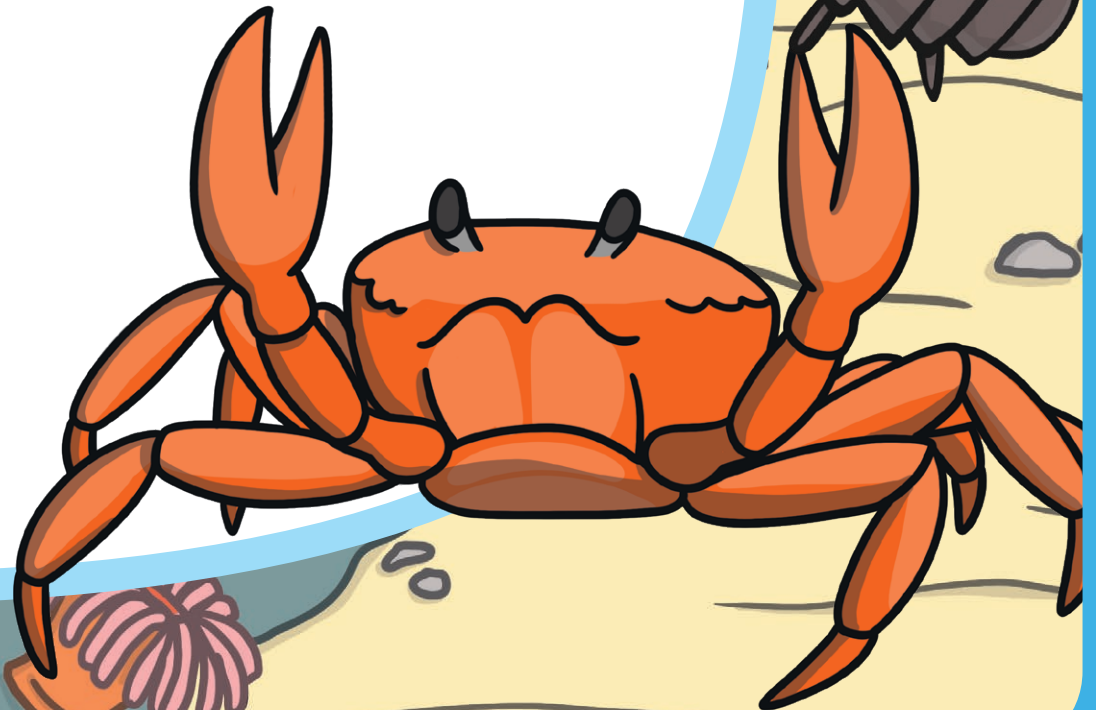
- Are **cold**-blooded, though their blood (actually called haemolymph) is not like ours as it does not carry oxygen or carbon dioxide.
- Live on land and in water.
- Have bodies in 3 parts and most insects have 2 pairs of wings.
- Have skeletons on the outside of their bodies.
- Hatch from eggs and often change their bodies (for example, a caterpillar changes into a butterfly).



# Crustaceans

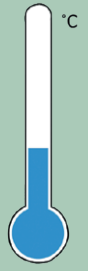


- Are **cold**-blooded.
- Live usually in the sea (except for woodlice!).
- Have skeletons on the outside of their bodies.
- Lay eggs.

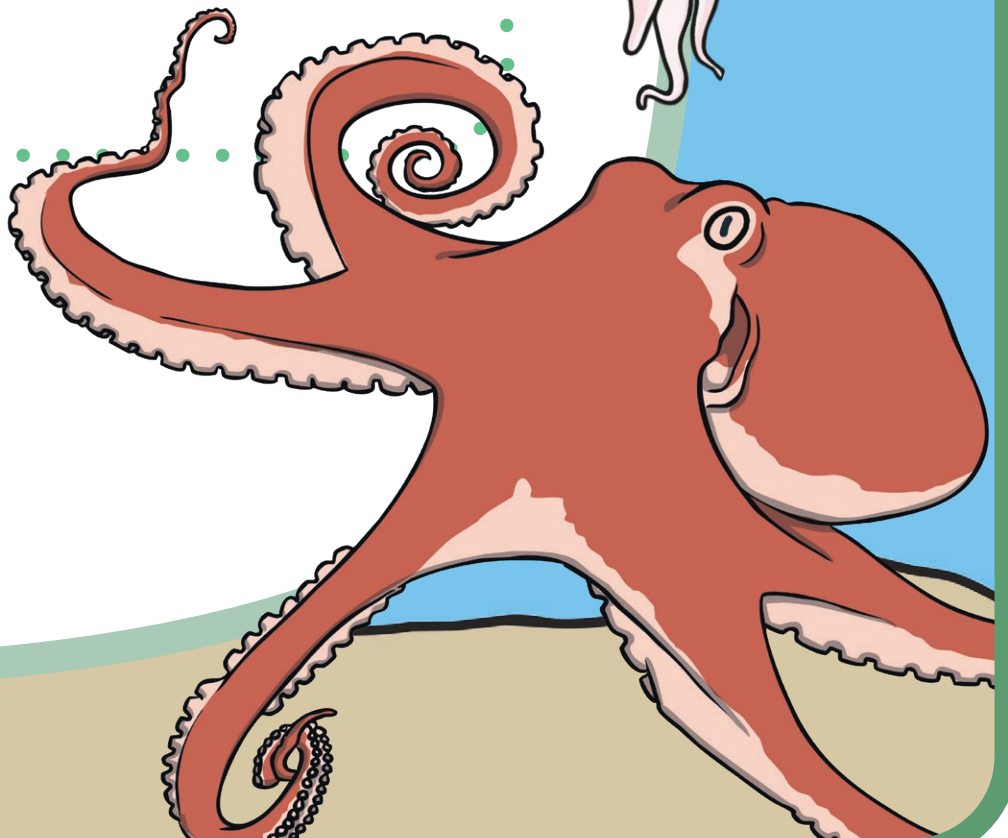
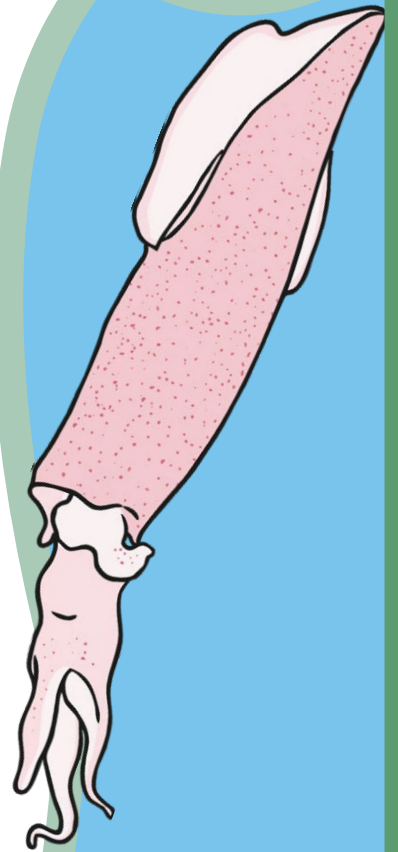


# Molluscs

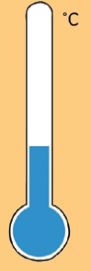
(Mollusks)



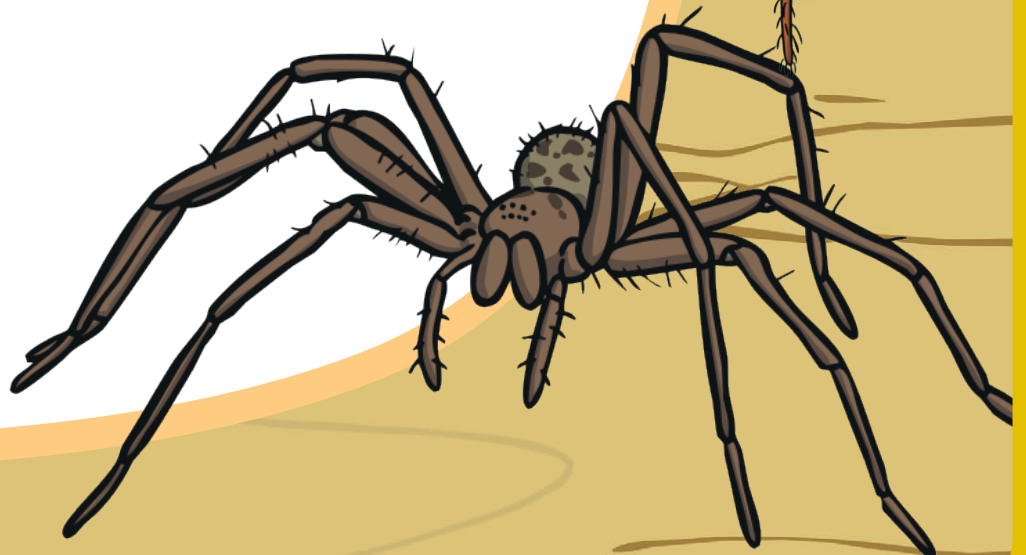
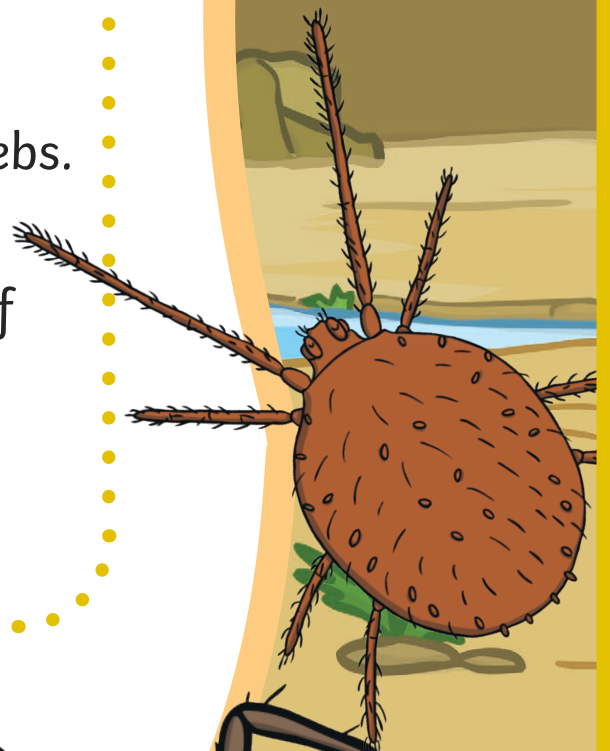
- Are **cold**-blooded.
- Live on land or water.
- Have very soft bodies.
- Some have skeletons on the outside of their bodies.
- Lay eggs.



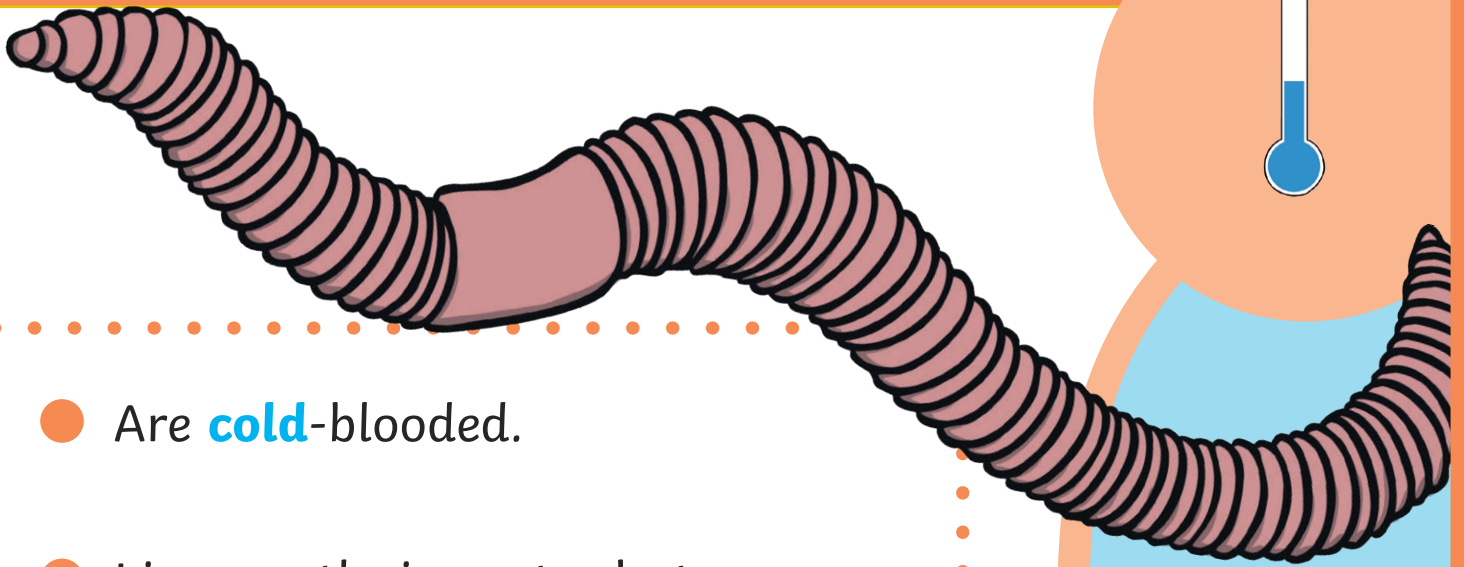
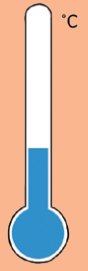
# Arachnids



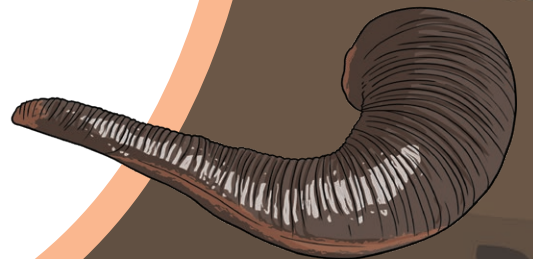
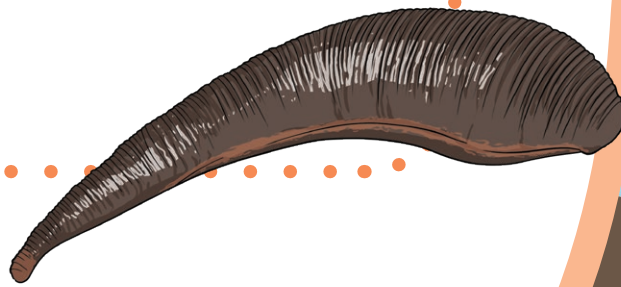
- Are **cold**-blooded.
- Live mostly on land.
- Have 8 legs and spiders spin webs.
- Have skeletons on the outside of their bodies.
- Lay eggs.



# Annelids



- Are **cold**-blooded.
- Live mostly in water but some live on land.
- Have soft, segmented bodies.  
Have no skeleton.
- Lay eggs.



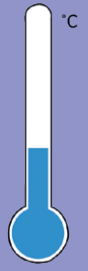
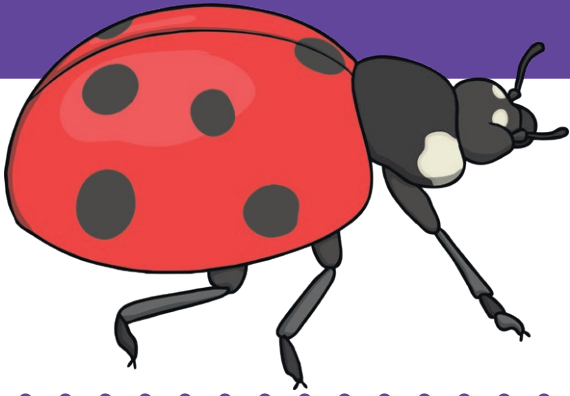
# Gastropods



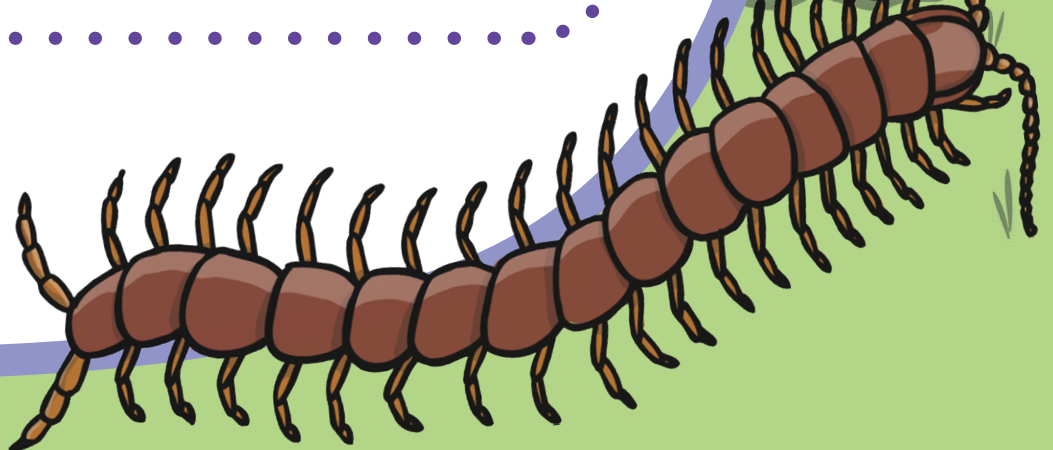
- Are **cold**-blooded.
- Commonly known as slugs and snails.
- Are invertebrate (without a spine).
- Tentacles with smell and taste receptors.
- Many have shells for protection.



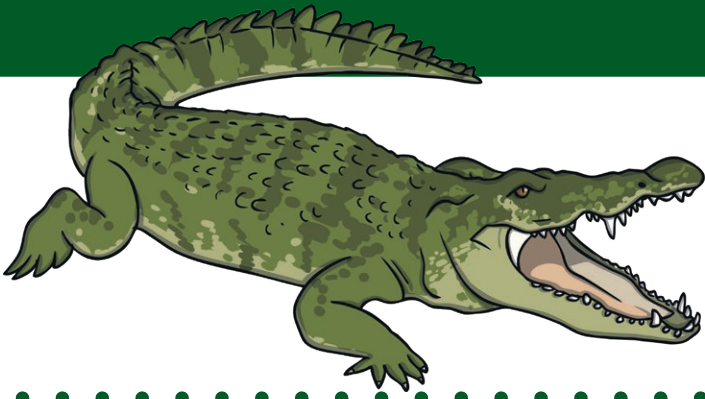
# Invertebrates



- Are **cold**-blooded
- Are animals without backbones.
- Can be divided into further groups.
- These include: Molluscs, Insects, Arachnids, Annelids, Crustaceans and Echinoderms.
- Some examples of invertebrates are: ladybirds, squids, bees, snails, centipedes, wasps and flies.



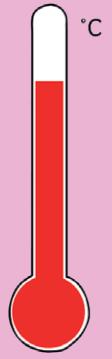
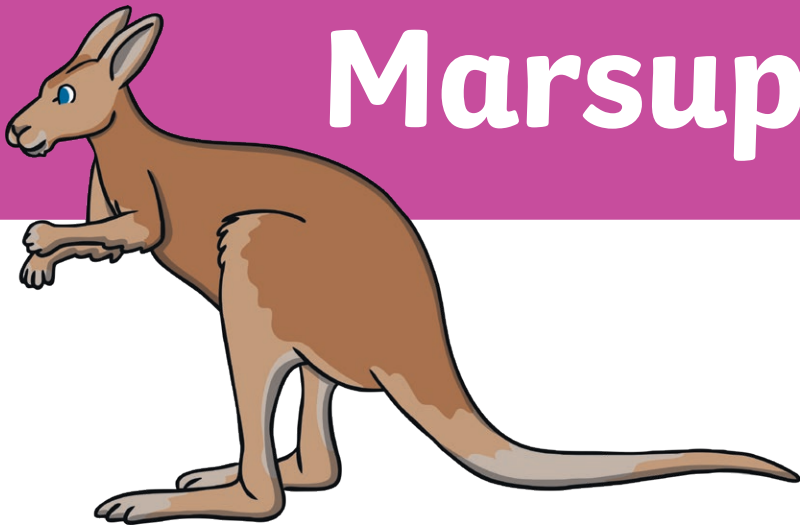
# Vertebrates



- Are **warm**-blooded.
- Are animals with backbones.
- Can be divided into further groups.
- These include: fish, amphibians, reptiles, birds and mammals.
- Some examples of vertebrates are: frogs, alligators, dogs, sharks, owls, leopards, and clownfish.



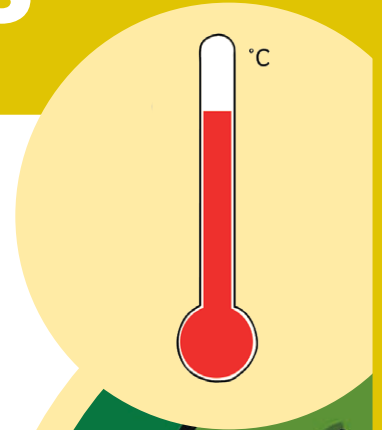
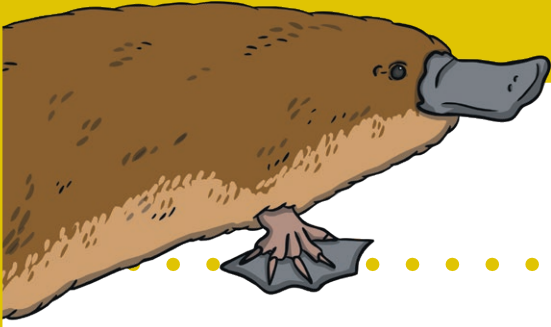
# Marsupials



- Are **warm**-blooded.
- Their young drink their mother's milk.
- Have hair or fur.
- Keep their newborns in a pouch.
- There are over 330 species of marsupials. They live mostly in Australia and South America.



# Monotremes



- Are **warm**-blooded.
- Their young drink their mother's milk.
- Have hair or fur.
- Lay eggs.
- Are less well-known than other mammals because there are only five living monotremes: the duck billed platypus and four species of echidna.
- Found only in Australia and New Guinea.

